

SEPTEMBER 2017 ₹ 200

ARCHITECTURE+DESIGN

A N I N D I A N J O U R N A L O F A R C H I T E C T U R E



responsive design

“We are the children of our landscape; it dictates behavior and even thought in the measure to which we are responsive to it”

— Lawrence Durrell

ISSN 0097-0239



9 770097 023695



Pentaspace Team

Translating a calm amidst chaotic environs—

Project: Aroha, Mumbai

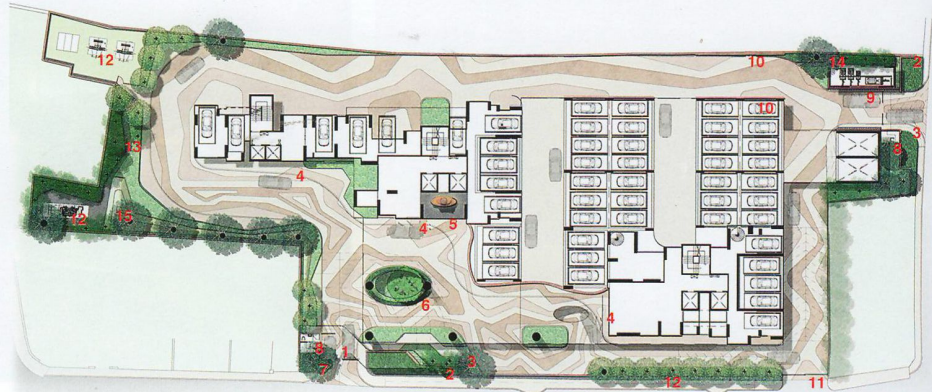
Architects: Pentaspace Consultants Pvt Ltd, Mumbai

The project exudes serenity and luxury amidst the unceasing hustle and bustle of the city. Its architecture and design became one of the most coveted features among residential projects in the city. Situated in Borivali, a busy suburb of Mumbai, the project has been designed with intricacy bearing in mind characteristics of culture and sophistication.

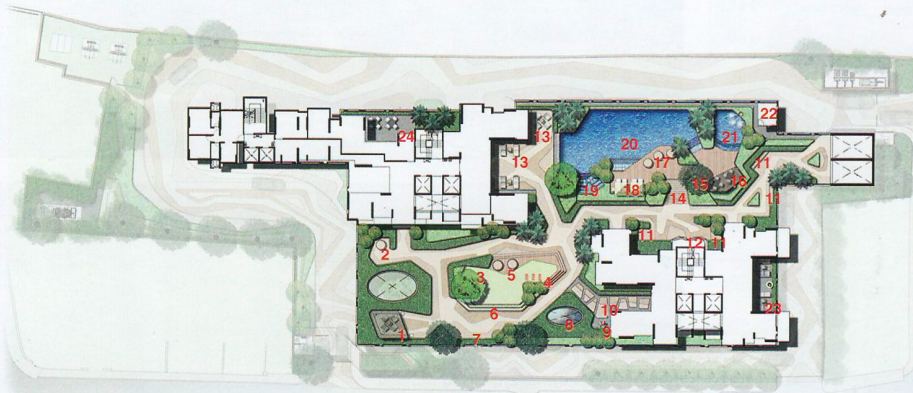
The architects derived inspiration and integrated the architecture and design of the project with aspects of Buddhism to create cognizance about the adjacent Buddhist Caves designated as a UNESCO World Heritage Site.

It is a themed residential project. The divine figurines of Buddha placed strategically in the entranceway and

1. MAIN ENTRANCE WITH COVERED GATEWAY
2. SIGNAGE SETTING
3. PEDESTRIAN WALKWAY ACCESS
4. DROP OFF
5. FEATURE SCULPTURE
6. ROUNDABOUT WITH SIGNAGE TREE
7. EXISTING TREE
8. GUARD HOUSE
9. DECORATIVE WALL/PUMP ROOM SCREEN
10. DECORATIVE WALL
11. EVA ENTRANCE
12. SUB STATION/DG SET
13. SERVICE PATH

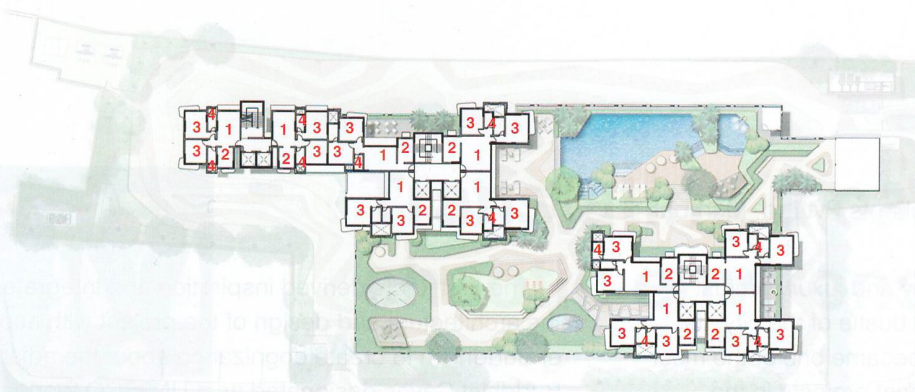


GROUND FLOOR PLAN



PODIUM FLOOR PLAN

1. MEDITATION/YOGA PAVILION
2. ELDERLY SITTING AREA
3. PLAY LAWN
4. KIDS PLAY EQUIPMENT
5. PARENTS SITTING TERRACE
6. AMPHITHEATRE
7. EXERCISE AREA/BBQ PARTY AREA
8. SKYLIGHT
9. VISUAL GARDEN WITH SCULPTURE
10. STEPPING STONE WALKWAY
11. SEAT WALL
12. 3M HIGH CLIMBING WALL
13. OUTDOOR LOUNGE/ PARTY AREA
14. STAIRCASE TO SWIMMING POOL
15. YOGA TERRACE
16. PARENTS SITTING TRELLIS
17. SUNSET POOL TERRACE
18. POOLS BEDS AREA
19. JACUZZI
20. 20 M LAP POOL
21. KIDS POOL
22. PUMP ROOM/STORAGE
23. PRIVATE CITY VIEW TERRACE
24. RELAXING TERRACE



TYPICAL FLOOR PLAN

1. LIVING/DINING
2. KITCHEN
3. BEDROOM
4. TOILET



SECTION



the elaborate fresco paintings on the ceilings are meant to draw an association with the Buddhist culture while also promoting the Buddhist Caves containing incredible stone sculptures that exist in close proximity. The fresco paintings of animals, people and tools painted in grey and white give an instant connotation of a cave dweller to the residents/visitors. The grey and white colour palette presents a contemporary finish. A long drop-off canopy with cut-

outs lets the sunlight penetrate through the entire space, creating a natural environment.

The caves carried into the lobbies narrate a story with carved walls, recounting the life of Buddha. Natural stones are used for wall cladding and flooring which are in tune with the language carried all over the project.

The building is designed to get in maximum natural light and ventilation. Finishes and colour palette used in



SECTION

the building are rustic and earthy in nature - the building is finished in sand faced plaster with texture. The coffee brown colour resembles the stone shades that are found and available in the surrounding areas. The chajjas of the building are curved at the edges, which resemble the stone surface.

Moreover, a detailed landscaping is done across the project to enhance the environment. The flooring on the podium level/landscape area is of stamp concrete, made to resemble and feel like a cave floor bed. A jagged pool design represents the non-symmetry found within the nature. Sanjay Gandhi National Park located alongside offers views that instil tranquillity in the minds of the residents.

The architects have amalgamated cave architecture features into modern architecture to inculcate a sense of awareness and curiosity of the heritage grandeur present in the vicinity to the inhabitants of this project.

The project also offers first-in-class amenities like designer and luxury fittings in homes, yoga pavilion, amphitheatre, sunset pool terrace, Jacuzzi, kids' pool,

outdoor lounge/party area and a lot more. The project has been designed not only to look extravagant, but to also vitalize the city's heritage and promote it in the modern context.

It has been designed in a way to create a micro environment for its inhabitants amidst the concrete jungle and the chaos of the city, which reflects and responds to the already existing heritage in the neighbourhood. +

Factfile

Client: Kanaika Spaces Pvt Ltd

Design team: Gaurav Sanghavi, Ar Harsh Pote

Consultants: Mahimtura (Structural), Radiant Consultants (Mechanical, Electrical, Plumbing, HVAC), Pentaspace Interiors (Interior), Techtronix, Singapore (Landscape)

Built-up area: 3,00,000sq ft

Cost of project: Rs 75 crore

Year of completion: 2017

Company names of products/materials used: Paints: Godavari Paints