

ARCHITECTURE+DESIGN

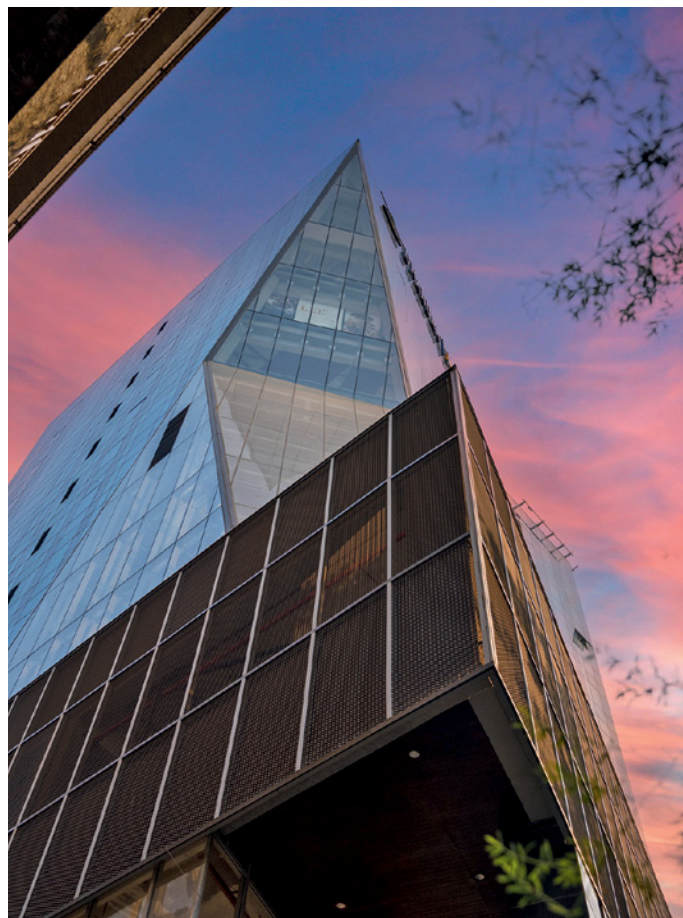
A N I N D I A N J O U R N A L O F A R C H I T E C T U R E



FOUNDERS, PENTASPACE DESIGN STUDIO, MUMBAI

Gaurav Sanghavi, Harsh Pote, Pragya Sanghavi & Bhakti Pote

Pentaspac is among the leading architectural firms in the real estate market, with around 100 completed projects in housing, retail, hospitality, industrial and commercial spaces.



Pentaspac is a collaboration between architects Gaurav Sanghavi, Harsh Pote, Pragya Sanghavi and Bhakti Pote. Since its inception in 2007, Pentaspac has dabbled in architecture and interior design for residential, commercial, hospitality and industrial projects. The firm's robust portfolio rounds up to about 20 million sq ft of space within the country.

Pentaspac believes that architectural synergy is a response to space, nature and light. This thinking is indigenous in all their projects, driving them from contextual to creative, and authentic to sustainable. The wide breadth of their projects includes unconventional spaces such as mass housing, old-age homes, exquisite villas, as well as toilets in rural India as part of the Swachh Bharat Abhiyan CSR.

"We work on an interesting format, where the scope of each project is divided amongst all four principals. Together, we work towards a larger goal by adopting an exploratory approach that evolves with each site. The studio format brings four different thought processes and ideas together to see a project through to the very end. This distinctive dynamic and unparalleled



“

We work on an interesting format, where the scope of each project is divided amongst all four principals. Together, we work towards a larger goal by adopting an exploratory approach that evolves with each site”

—GAURAV SANGHAVI, Founder, Pentaspac Design Studio

“

Our research division is focused on understanding the changing needs of the community, and devising strategies to use new design, materials and construction technologies to build cost-effective and sustainable buildings.”

—PRAGYA SANGHAVI, Founder, Pentaspac Design Studio

scope of ideas gives Pentaspac a definite edge,” explains Gaurav who leads conceptualisation and project planning.

“Our research division is focused on understanding the changing needs of the community, and devising strategies to use new design, materials and construction technologies to build cost-effective and sustainable buildings,” adds Pragya Sanghavi who heads the research division.

“We started Pentaspac as a blueprint to redefine the realm of architecture in 2007,” says Gaurav. Pentaspac now has a thriving portfolio across the Indian Real Estate market, spanning luxury and affordable housing, hospitality, retail, industrial, and commercial projects. Today, Pentaspac has earned a reputation for innovative, distinctive concepts that not only relevant for every strata, but every mindset. ✚